

MARINE PROTECTED AREA (MPA)
COMPLIANCE INITIATIVE 2019-2022

Impact Report



**COLLABORATIVE
NETWORK**

www.mpacollaborative.org



MARINE PROTECTED AREA (MPA) COMPLIANCE INITIATIVE 2019-2022

The MPA Collaborative Network turns community input into action!



Highlights

430+ Enforcement partners engaged through trainings	115+ Distinct agencies/departments in trainings (*EC 1.3.6)	120+ Mentions supporting surveyed boundary images	450 Officer reference guides distributed	500 Community Compliance Forum participants
				
35 Local agencies reporting violations, contacts, &/or cites (*EC 3.2)	18 DA's attending MPA trainings for officers	50+ Prosecutors and court officers in the MPA Task Force (*EC 2.1.1-4)	136+ Views of new MPA compliance-focused video	56 Collaborative Compliance Small Grant Projects
				

*MSLT Work Plan: Enforcement & Compliance (EC)



Humboldt and Del Norte Compliance Small Grants Overview



Best Practices for Tribal Engagement in Marine Protected Area Stewardship



This document is intended to serve as a starting point for equitable engagement of Indigenous peoples within marine management and MPAs. It includes eight suggested practices compiled from lessons learned throughout a decade of relationship building with Indigenous peoples and Tribes across California, as well as conversations, interviews, and trainings held by and with Indigenous peoples throughout 2022. The document also includes a brief history of Indigenous injustice in the MPA designation process and resources for further exploration.



Brochures

A six-panel brochure was created using materials contributed by Collaborative members and Tribal partners. The brochure features Del Norte and Humboldt MPAs, marine ecology, and Tribal information. 4,200 brochures were printed and distributed to 15+ locations.



Signage

Regulatory, harbor, and interpretive signs were created for the following locations:

Location & Details	MPA	Sign Type
Pelican State Beach	Pyramid Point SMCA	Regulatory
Wavecrest Drive	Pyramid Point SMCA	Regulatory
Gold Bluffs Beach	Reading Rock SMCA	Regulatory
Redwood Creek Parking Lot	Reading Rock SMCA	Regulatory
Trinidad Harbor	Multiple	Harbor
Brookings Harbor	Multiple	Harbor
Crissy Field Welcome Center Oregon	Pyramid Point SMCA	Interpretive
Wavecrest Drive	Pyramid Point SMCA	Interpretive
Point St. George Parking Lot	Point St. George Reef Offshore SMCA	Interpretive
Pebble Beach Drive	Castle Rock Special Closure	Interpretive
Trinidad Harbor	Multiple	Interpretive

Conserving California's Coastal Treasures

Marine Protected Areas Safeguard Our Ocean's Bounty

A statewide network of Marine Protected Areas (MPAs) safeguards California's rich coastal resources. Situated in the heart of the Tolowa Dee-ni' (People) ancestral territory, Pyramid Point is known in the Dee-ni' language as Tr'u-u-luu-k'wvt meaning "one-line-fishes-upon-there". The Tribe's continual relationship with the ecosystem and traditional stewardship methods exemplify the belief that if we take care of the ocean, it will take care of us. From the dunes to the intertidal and offshore rocks, to the marine life amongst them, MPAs ensure a healthy ocean for future generations.

California leads the nation and the world with its network of MPAs.

- Have varying levels of protection
- Conserve marine habitats and diversity
- Allow marine life to thrive
- Places for education, and fun

For more information, visit www.wildlife.ca.gov/MPAs or call (888) 334-CALTIP (888) 334-2258.



Standing Photo Displays

Five standing photo displays were created for display at events and throughout the county at the offices and centers of partner organizations. Displays include MPA photos by community members as well as information on MPA types, ecology, and regional Tribes.

STATE MARINE CONSERVATION AREAS

Del Norte and Humboldt

Pyramid Point State Marine Conservation Area
by Calli Wilson

Samos State Marine Conservation Area
by

As a result of Tribal advocacy and engagement, some tribal nations are exempt from regulations in SMCAs. This allows for the continuation of unceded aboriginal rights of Tribes to coastal and nearshore waters.

Point St. George Reef Offshore State Marine Conservation Area
by Rob Howe

Reading Rock State Marine Conservation Area
by Michael Jarman



Tribes and Tribal Harvest

Del Norte and Humboldt

Joseph Thompson, Coast Coordinator at Tolowa Dee-ni' Nation, assists Tyler Jones, Natural Resources Technician from Rongitahai Rancheria, with getting the surf fish slip-net ready for use. Ocean High, Eureka.

by Rongitahai Rancheria

A long history of caring for the coast allows tribes to contribute not only important traditional ecological knowledge, but also contemporary Western science to the ongoing management of California's MPAs, ocean, and coast.

Traditional Tunka Regalia is worn by Tunka Tribal members during ceremony
by Ruthie Maloney

Tribal people continue to rely on their territory for subsistence that provides health and vitality to the people.
"Tunka" by Tolowa Dee-ni' Nation

Traditional seaweed gathered by Rongitahai Rancheria and Tolowa Dee-ni' Nation
by Rongitahai Rancheria



Mendocino Collaborative

Compliance Small Grants

Overview



Digital Sign Pilot Project

A digital highway sign was placed at Big River SMCA for 4 months. Surveys of visitors were conducted to determine whether the signs led to behavior change. Sign messages included:

- Marine Protected Area
- Respect Wildlife Stay Back
- Watch For Swimmers
- Leash Dogs

Overall, we found that 72% of people surveyed were aware of MPAs in the area, and 12% reported changing their activities after seeing the MPA signage, we did not detect a significant change in beach use in human activities surveyed during the pilot project. Recommendations and key-takeaways, can be found in the [final project report](#).



Rangefinding Binoculars Pilot Project

Point Cabrillo and Point Arena Lighthouse staff and docents identified the need to accurately determine the boundaries of the MPAs, recognize a potential violation, and accurately identify the vessel number to report to CDFW and CalTIP.

To meet this need, rangefinding binoculars were purchased for both lighthouses and now reside with the staff, who are now using the binoculars to determine if vessels are within MPA boundaries and/or violating MPA regulations.



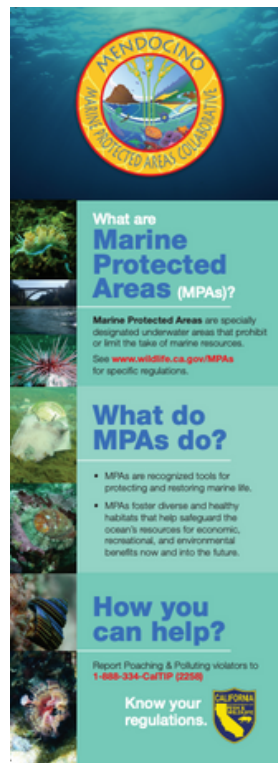
Regulatory and Harbor Signs

Regulatory signs were created for the 8 locations listed in the righthand table. An additional harbor sign was created for Noyo Harbor to inform commercial and recreational fishing vessels of local MPA boundaries and regulations.

MPA	Location & Details
Point Cabrillo SMR	Frolic Cove
Point Cabrillo SMR	end of Vega Dr
Ten Mile Beach SMCA	Ocean Meadows Cr
Ten Mile Beach SMR	Seaside Creek Beach (Replace Missing Sign)
Ten Mile Beach SMR	Hwy 1 Pullout (Replace Vandalized Sign)
Saunders Reef SMCA	Hern Gulch
Saunders Reef SMCA	Hwy 1 Turnout
Point Arena/Sea Lion Gulch	Point Arena Stornetta BLM Unit Gate

Brochure Distribution

1,450 Mendocino MPA brochures were distributed to approximately 20 locations and events throughout Mendocino County.



Standing Photo Displays

Five standing photo displays were created for display at events and throughout the county at the offices and centers of partner organizations. Displays include MPA photos by community members as well as information on MPA types, ecology, and regional Tribes.





Sonoma Collaborative

Compliance Small Grants Overview



Digital Sign Pilot Project Background

In 2020, the Sonoma and Mendocino MPA Compliance Forums identified lack of awareness of MPAs by visitors as the primary factor contributing to non-compliance in MPAs. The Collaboratives identified increased signage near areas of high impact as the primary strategy to improve compliance among coastal visitors. Based on these results, Sonoma and Mendocino Collaboratives launched a digital message traffic signs pilot project in 2022 to inform coastal visitors about local MPAs to improve regulatory compliance.



Placement and Messaging

Sonoma and Mendocino MPA Collaborative partners identified priority digital sign locations with high visitor attendance and concerns regarding impacts to the habitat. The signs each had 3 rotating messages.

Mendocino

Big River SMCA: high visitation in the summertime, increased use by locals as a place to swim during the pandemic, prevalence of dogs off leash violations

Messages:

1. MARINE PROTECTED AREA
2. RESPECT WILDLIFE STAY BACK
3. WATCH FOR SWIMMERS LEASH DOGS

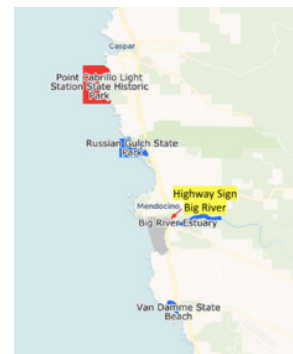


Sonoma

Bodega Head and Goat Rock: high human use and breeding harbor seals and seabirds

Messages:

1. MARINE PROTECTED AREA
2. RESPECT WILDLIFE STAY BACK
3. WILDLIFE.CA.GOV/MPAS





Golden Gate Collaborative

Compliance Small Grants Overview



Duxbury Docent Program

In response to human use data showing dramatic increases in public visitation to Duxbury Reef State Marine Conservation Area (SMCA), the Environmental Action Committee (EAC) of West Marin developed the Duxbury Docents program at Agate Beach County Park and Duxbury Reef with support from collaborative compliance small grant funding and other partners. The volunteer docent program focuses on helping to educate the public about rocky intertidal reef ecology and stewardship practices in the sensitive habitat in and around the Duxbury Reef SMCA which is the largest shale reef in California and one of the largest in North America.

Learn more about the program here:
<https://www.eacmarin.org/duxbury-docents>



Photo by EAC Marin

Golden Gate MPA Brochure Reprints

Funding supported reprinting 1,000 copies of the *Marine Protected Areas off the Golden Gate* brochure. The brochure was previously created by the Golden Gate Collaborative as a resource for recreational fishermen, kayakers, beach-goers, boaters, and ocean stewards. Brochures were distributed to the community through outreach efforts of EAC Marin and the Greater Farallones National Marine Sanctuary / Seabird Protection Network.

Find the brochure here:
<https://www.mpacollaborative.org/project/golden-gate-mpa-brochure/>



Duxbury Docents
Volunteer Training Program

Duxbury Reef needs our help!
Increasing visitation is taking its toll on the intertidal life of the reef.

If you would like to help educate visitors about the wonders they discover on the reef, and help to protect the reef's sensitive intertidal habitat and marine life, we invite you to join our FREE training program to become a volunteer Duxbury Docent!

Participants must:

- Be at least 18 years old.
- Commit to two 2-4 hour, scheduled shifts per month (low tides in daylight)
- Show proof of full COVID vaccination completed before January 6, 2023.
- Be able to move about comfortably on the slippery and uneven surfaces of the intertidal area.

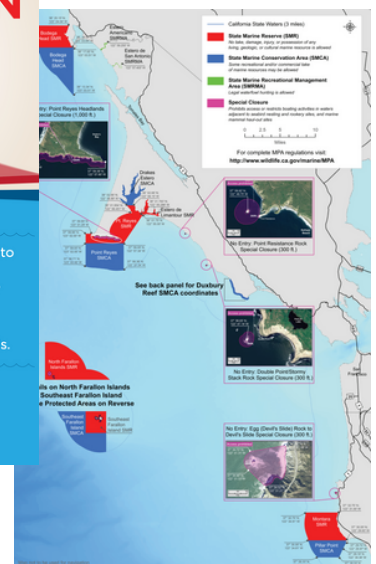
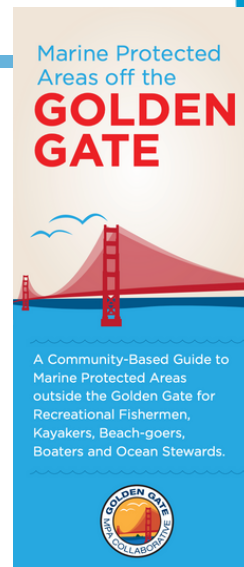
Five sessions in January - February 2023 on:

- Duxbury Reef flora and fauna
- Intertidal zonation
- Reef ecology
- Anthropogenic impacts
- Tide pooling etiquette
- How to be a docent
- California Marine Protected Areas and relevant regulations.

Dates:
Saturday, January 21 (12:00-5:30pm)
Saturday, February 4 (12:30-5:30pm)
Friday, February 17 (12:15-5:30pm)
Saturday, February 18 (12:30-5:30pm)
Sunday, February 19 (12:30-5:30pm)
If bad weather cancels, additional dates:
Saturday, March 18
Sunday, March 19

west marin
environmental action committee

For more information and to register, email: leslie@eacmarin.org or visit: [eacmarin.org/duxbury-docents](https://www.eacmarin.org/duxbury-docents)





San Mateo Collaborative

Compliance Small Grants Overview



Pillar Point Tidepool Stewards Program and Coordinator

The Tidepool Stewards Program at Pillar Point trained 22 stewards to talk to visitors on the reef about sustainable harvesting methods and to inspire curiosity in the biodiversity of Pillar Point reef in El Granada, Half Moon Bay California. Pillar Point reef is a mixed-use area that is open to collecting (only protected by Fish and Game Regulations) on the south side of the reef. To the North are two California marine protected areas (MPAs), Pillar Point State Marine Conservation Area (SMCA) and above that further up the coast is Montara State Marine Reserve (SMR). In addition to educating the public about sustainable harvesting methods and what they were allowed to take, it was also important to inform visitors about the boundary to the MPA and what was and was not allowed across that boundary.

A total of 24 Steward shifts were completed from April to August during the project period. At least nine local partner agencies/organizations were engaged by the Coordinator in volunteer training and program development. Over 16 different printed materials and 16 different digital materials were created or sourced by the Coordinator for the volunteers, including an online tide calculator and volunteer website to streamline shift scheduling.

Learn more about the ongoing pilot program in the detailed *Lessons Learned Report* here: <https://www.mpacollaborative.org/project/lessons-learned-from-pillar-point-tidepool-stewards/>

"Every low tide event I have been present at has had Pillar Point Tidepool Stewards. This has greatly reduced the number of violations that I used to see due to ignorance of the law."

Gabrielle Stauffer, CDFW
Wildlife Officer



Photos by Rob Cala (top left), Natalie Downe (top right, bottom left), and Rebecca Johnson (three on bottom right)



Santa Cruz and Monterey Collaboratives



Compliance Small Grants Overview

Explore Monterey Bay and Beyond Brochure and Webpage

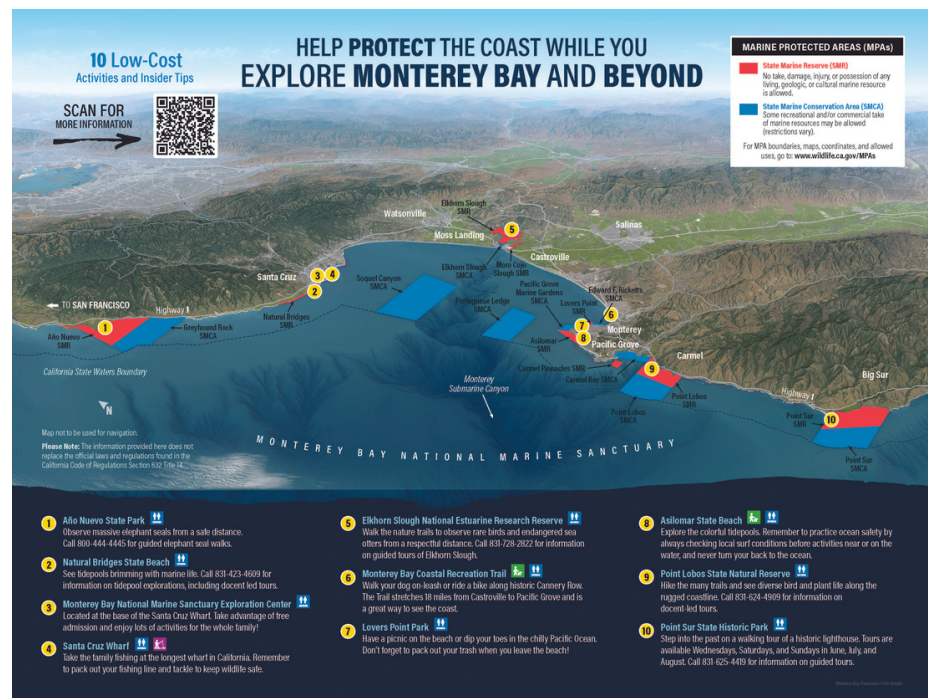
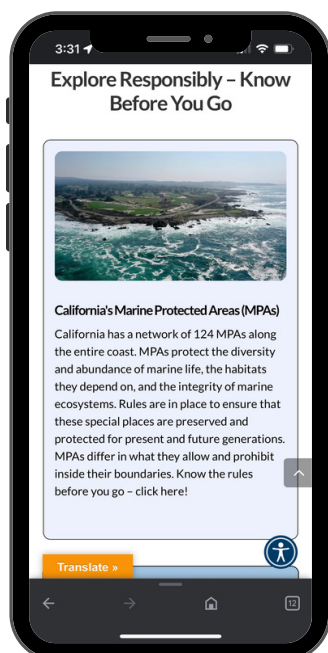
A joint MPA Compliance Small Grant project between the Monterey and Santa Cruz Collaboratives resulted in the Explore Monterey Bay and Beyond Brochure and supporting web page (linked via QR code on the brochure). The resource is designed to share marine protected area (MPA), wildlife disturbance, and other environmental information/resources with tourists to the Monterey Bay Area and Big Sur. The brochure also highlights 10 low-cost activities adjacent to California's MPAs and the Monterey Bay National Marine Sanctuary.



A total of 40,000 brochures will be distributed by Certified Folder Display Service, Inc. over the next year to 447 tourist locations and by almost 25 Santa Cruz and Monterey MPA collaborative members. At least 13 distinct organizations, agencies, and businesses were engaged in this project. The Monterey and Santa Cruz County Convention and Visitors Bureaus are helping to advertise the resources through their digital communication channels.

Learn more about the resources and find the Lessons Learned Report here:

<https://www.mpacollaborative.org/project/explore-monterey-bay-and-beyond-brochure/>





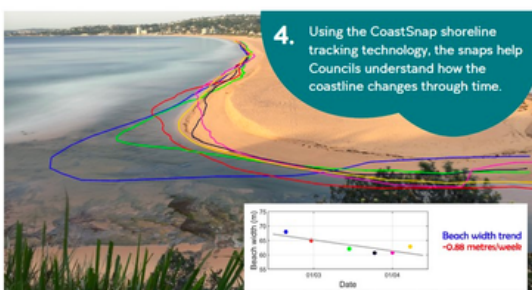
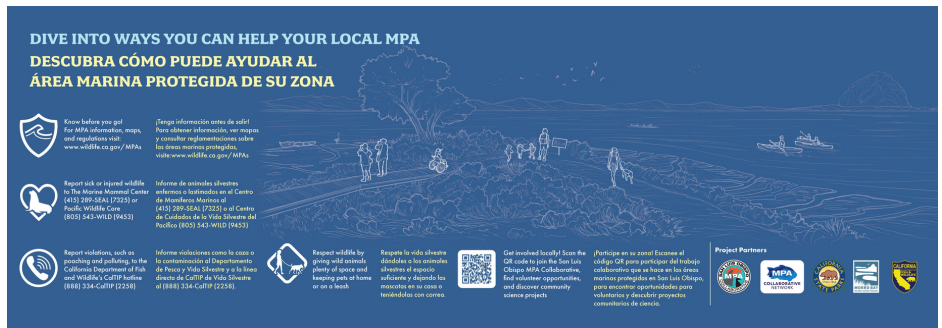
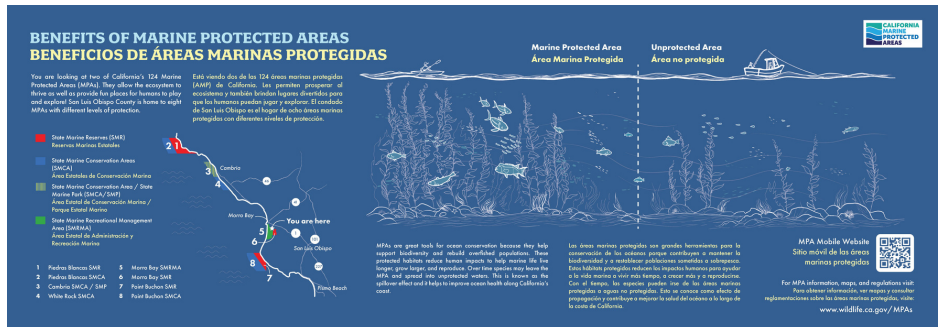
San Luis Obispo Collaborative

Compliance Small Grants Overview



MPA and Community Science Exhibit for Morro Bay Museum of Natural History

Three new exhibit panels were designed for the outside deck of the Morro Bay State Park Museum of Natural History that highlight area MPAs, local tribes, common species, and ways to engage. Interpretive text on the panels is presented in English and Spanish. Content and language was generously shared by the yak ti'yu yak ti'hini Northern Chumash Tribe and the Salinan Tribe for inclusion on the panels.



Accompanying the new exhibit panels will be a Coast Snap community/citizen science station where participants can capture photos that look at tidal fluctuations and sea level rise of the estuary over time, informing estuary MPA monitoring efforts of the Moss Landing Marine Laboratory.

Regulatory and interpretive signs were created for the following locations:

Conserving California's Coastal Treasures

Marine Protected Areas

These waters are protected as a National Marine Sanctuary and by a state network of Marine Protected Areas (MPAs). These MPAs include State Marine Reserves (SMR), State Marine Conservation Areas (SMCA), a State Marine Park (SMP) and a State Marine Recreational Management Area (SMRMA).

How to Respect Wildlife

- Lend a hand with trash removal
- Properly dispose of fishing line
- Keep your snacks to yourself
- Hang back and enjoy the view

Safeguard Our Ocean's Bounty

Salmon, steelhead, sandy lancefish, and many marine resources are home to a rich variety of marine life and commercially important species.

Since time immemorial Salishan and Northern Chinook people have lived along the coast where the nearby village was known as Sgaghwa. Salmon catch from local fishery and mariculture for cultural events like Shashone Festival, Elsie's paper money festival and last but not least... Harvest the bounty! (Fishing guide and fish market) collected power (the seaweed), Emerald (aluminum), maple (glass) and sail (linen) from the rocky intertidal zone.

The park offers the public a chance to experience the coastline to know their own culture better and to learn about the history. How they traditionally harvested an abundance of resources including (but not limited to) salmon, trout, herring, and other fish and shellfish (like clams, mussels, etc.).

To ensure off-season visitors can see the same traditional gathering places that are part of the park's heritage.

State MPA Regulations

- Cambria State Marine Conservation Area and State Marine Park (SMCA/SMP)**: Recreational Fishing allowed; No commercial fishing allowed.
- White Rock (Cambria) State Marine Conservation Area (SMCA)**: No recreational or commercial take of any marine resources allowed except for commercial take of sea urchins and giant kelp forest.

CAMBRIA STATE MARINE CONSERVATION AREA AND STATE MARINE PARK

This is a Marine Protected Area. Explore the tidepool habitat with care to protect plants and animals that live between land and sea.

HELP PRESERVE THE CENTRAL COAST

Take photos, not souvenirs.
Removing animals, plants, shells, or rocks may cause damage or loss of a home.

Observe animals where they are.
Pickering up animals can be dangerous. Turning over rocks can crush and expose animals to predators.

Step carefully.
Avoid crushing delicate plants and animals.

Hang back and enjoy the view.
Give resting wildlife plenty of space.

MARINE PROTECTED AREA

NO FISHING OR COLLECTING

C.C.R. TITLE 14, SECTION 632

www.wildlife.ca.gov/MPAs

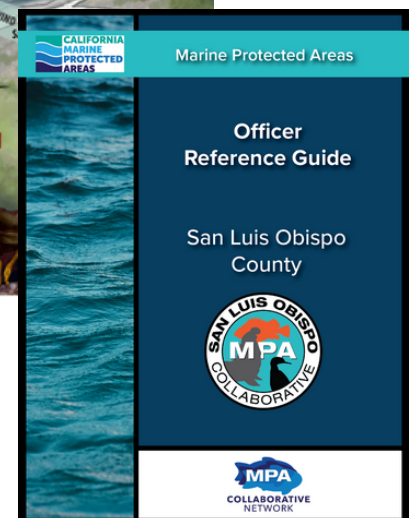
REPORT VIOLATIONS TO:
1-888-334-CALTIP (2258)

RECREATIONAL TAKE IS ALLOWED WITH VALID FISHING LICENSE.

TO REPORT VIOLATIONS: CALL 1-888-334-CALTIP (888-334-2258)
OR TEXT 845411

For detailed maps and regulations see: www.wildlife.ca.gov/MPAs

Inclusion of MPA content, approved by CDFW, into Sea Otter Savvy's new Avila Beach Paddle In Guide created in partnership with Avila Beach Paddle Sports. The guide also features information on how to respect wildlife while recreating on the water. Two thousand waterproof brochures will be printed and distributed.



The San Luis Obispo MPA Officer Reference Guide was updated and 30 additional copies printed for distribution to local enforcement partners.



MPA COLLABORATIVE
NETWORK



RESOURCES LEGACY FUND®
CREATIVE SOLUTIONS. LASTING RESULTS.





Santa Barbara Channel Collaborative

Compliance Small Grants Overview



Subsistence Angling Community Outreach Event

The pilot project is a community-identified process for reaching underserved, underrepresented, and non-traditional audiences with fishing regulatory and MPA messaging. The SBC Collaborative decided that outreach to local subsistence anglers was one important first step and to use an approach of incentivizing participation with a gear giveaway. For the purposes of our project, subsistence anglers are those who primarily fish to feed themselves and their families, and fish primarily off piers (e.g., Goleta Beach pier), jetties, and areas that do not require a fishing license. Just Communities provided live interpretation from English to Spanish.



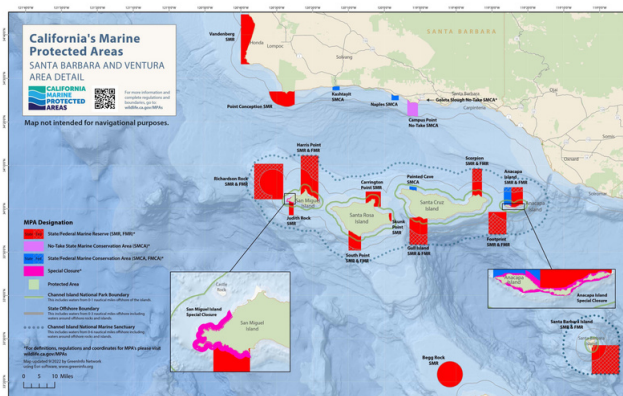
Outreach Materials

The SBC Collaborative developed or redesigned several types of outreach and printed materials including:

- Produced one interpretive panel replacement for Kashtayit State Marine Conservation Area in Gaviota
- Printed and will distribute 450 brochures with MPA boundary images from a licensed land surveyor
- Printed and will distribute ~3,000 flyers with a map of Santa Barbara Channel and mainland MPAs and QR codes to the CDFW mobile website for MPA regulations
- Developed, printed, and distributed 45 Officer Reference Guides



Know your local marine protected areas (MPAs)!



Know your local MPAs!

A statewide network of MPAs safeguards California's rich coastal resources while using different levels of protection that may allow for some fishing activities, in accordance with other fishing regulations. Offshore of Ventura and Santa Barbara Counties, there are five mainland MPAs, 14 Channel Islands MPAs, and two island Special Closures.

The California Department of Fish and Wildlife, which manages the statewide network of 124 MPAs, has an ocean sport fishing and MPA map designed for use on mobile devices. Learn more at: <https://wildlife.ca.gov/MPAs>

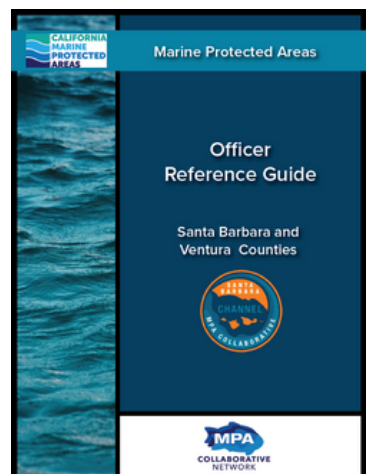
Scan here for the mobile MPA app:



Get involved at the community level through the MPA Collaborative Network. The local collaborative, Santa Barbara Channel MPA Collaborative, is one way to engage! Visit <https://www.mpacollaborative.org/santabarbara/> or scan here:



MPA COLLABORATIVE NETWORK





Los Angeles Collaborative

Compliance Small Grants Overview



Engaging Communities in Los Angeles & Collection of Reflections Report

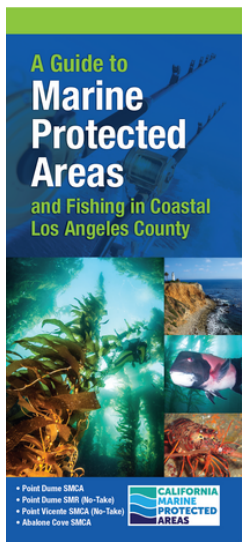


The Los Angeles MPA Collaborative's grant outcomes included:

- Forming an Equity and Inclusion Committee which met three times during the grant period and compiled a "Collection of Reflections" on observations, thoughts, recommendations, and guidance on approaches to be more inclusive and equitable
- Engaging New Earth DaVinci RISE High School serving at risk youth and system-challenged youth through five place-based sessions including four boat days in MPAs
- Engaging with young women of color in partnership with Empower Inc. during two MPA intertidal field explorations
- Identifying two community-based organizations to join the collaborative
- Participating in four community events away from the coast including Ciclaviva and fall festivals
- Hosting a listening session with Sacred Places Institute; visited Point Dume State Marine Reserve



LA County MPA Guide in English and Spanish



Important revisions were made to the Los Angeles MPA and Fishing Guide with MPA regulations, namely adding in Tribal exemption language for the Point Dume SMCA and adding an acknowledgement for Tribes including: Chumash, Gabrielino Tongva, Kizh, and Acjachemen nations. The LA Collaborative printed 15,000 MPA and fishing guides: 10,000 in English versions and 5,000 in Spanish.

Other printed materials identified for the grant included 2,500+ critter stickers with QR codes so people can learn more about the Collaborative Network and MPAs. These serve as a tool for Collaborative members to educate and engage; these locally-requested giveaways are for veterans fishing trips, MPA cruises with youth, and other tabling and outreach events.



Catalina Island MPA
Collaborative

Catalina Collaborative

Compliance Small Grants Overview



Catalina Island MPA
Collaborative

Catalina MPA Compliance Campaign Coordinator and Outreach Materials

In response to the Catalina Compliance Forum held in 2020, community members requested a compliance campaign be developed and led by a local Compliance Coordinator to improve compliance and awareness of Catalina Island MPAs. The Coordinator and partners set off to engaging with, training, and participating in events for residents and visitors. The Speakers Training Guide and in-person training on Catalina's MPAs, which had 40 attendees, helped inform local partners about how to educate the public about MPAs and their importance. The campaign set in motion a trend toward heightened awareness of locals and visitors to Catalina alike.

The Catalina Collaborative also developed and redesigned outreach materials including 10 regulatory signs (bottom left), three interpretive panels (bottom right) in Avalon, 6,500 updated brochures with surveyed boundary images, 25 Officer Reference Guides, and a pilot project on the O/K boundary markers for Lover's Cove (bottom center), which all contributed to improved MPA awareness and compliance at Catalina Island.

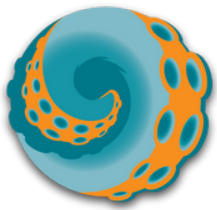


This work was made possible by a grant made through the
Once-Through Cooling program of Resources Legacy Fund, on
behalf of the Once-Through Cooling Interim Mitigation
Program of the Ocean Protection Council.

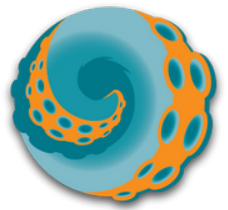


RESOURCES LEGACY FUND®
CREATIVE SOLUTIONS. LASTING RESULTS.





Orange County Collaborative



OCMPAC
ORANGE COUNTY MARINE
PROTECTED AREA COUNCIL

Compliance Small Grants Overview

OCMPAC
ORANGE COUNTY MARINE
PROTECTED AREA COUNCIL

Community Vetted Translations

To improve inclusion and access for non-English speakers and center culturally appropriate, multilingual MPA messaging, OCMPAC developed a pilot project. OCMPAC hosted a focus group for each of five languages (Mandarin, Spanish, Korean, Vietnamese, and Tagalog), and an additional one for Mandarin speakers (Traditional Chinese translation), with one to three participants per focus group for a total of 14 participants. There were 10 working group meetings and seven broader public scoping meetings. These five languages were identified as top priority languages as a starting place and were languages that Inline Translation Services, Inc translated regulatory signs, Good Tidepooler Rule (Harry the Crab) signs, and the OC Tidepool Brochure/Field Guide (right) into. Crystal Cove Conservancy worked with Sacred Places Institute for Indigenous Peoples to coordinate meetings and listening sessions with Acjachemen and Tongva tribal partners with a total of 10 participants.



MPA Signage in Orange County

Signage was a top solution to MPA compliance issues in Orange County. Additionally, dog related wildlife and habitat disturbances were a top compliance concern from the Compliance Workshop.

Over 60 total signs were developed, printed, and installed in Orange County, with a majority of signs to replace existing and faded signs for the City of Laguna Beach Department of Marine Safety (e.g., Cress Street Beach sign; far right) and signs for Dana Point.



Thirty of the 60 signs were sandwich board style signs that explain the why behind dog rules at the coast. Signs were printed for Crystal Cove State Park, City of Newport, Upper Newport Bay, Bolsa Chica, OC Parks, and can be tailored to any MPA or coastal location and are shareable templates. A QR code on each sign links to the webpage with more information (bottom right).



Dogs Can Explore Responsibly Too!
Know Before You Go



<https://www.mpacollaborative.org/oc/compliance/dogs/> - OC dog regulations and dog-friendly beaches webpage



This work was made possible by a grant made through the Once-Through Cooling program of Resources Legacy Fund, on behalf of the Once-Through Cooling Interim Mitigation Program of the Ocean Protection Council.



RESOURCES LEGACY FUND®
CREATIVE SOLUTIONS. LASTING RESULTS.





San Diego Collaborative

Compliance Small Grants Overview



Educators, Signage, Guides, and Youth Outreach

Tidepool Docent Program

During the grant period, the San Diego MPA Collaborative implemented a tidepool docent program and trained 12 docents to improve MPA compliance around tidepools. Docents educated visitors in four MPAs (e.g., Swami's SMCA; upper right) that cover nearly 20,000 acres total. The tidepool docents engaged 314 members of the public through 8 tidepool outreach events and distributed 150 San Diego MPA Wildlife and Recreation guides.



MPA Signage in San Diego County

Maintained, replaced, and created new signage for MPA access points identified and prioritized at the 2020 compliance workshop and enforcement training:

- Replaced 13 damaged or missing MPA signs
- Installed 10 regulatory signs approved by California Department of Fish and Wildlife (CDFW)
- Replaced a broken MPA interpretive panel with San Diego City Rangers at La Jolla Shores (far right);
- Developed and installed four new MPA education and outreach signs at San Elijo State Beach adjacent to Swami's State Marine Conservation Area (SMCA);
- Coordinated with the Port of San Diego, City of San Diego Rangers, CDFW, and MPA Collaborative members.



Pocket Fishing Guides

Developed, printed, and distributed 1,000 pocket fishing guides to the San Diego County MPA Collaborative for San Diego County MPAs (right)



Youth Outreach

Developed MPA sustainable fishing programming to engage four youth fishing clubs and their families and engaged a total of 60 students with partners from Outdoor Outreach, Open Heart Leaders, and Latino Outdoors