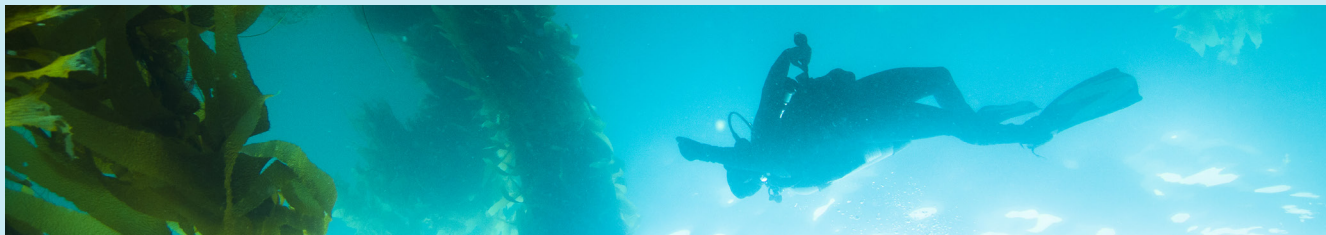
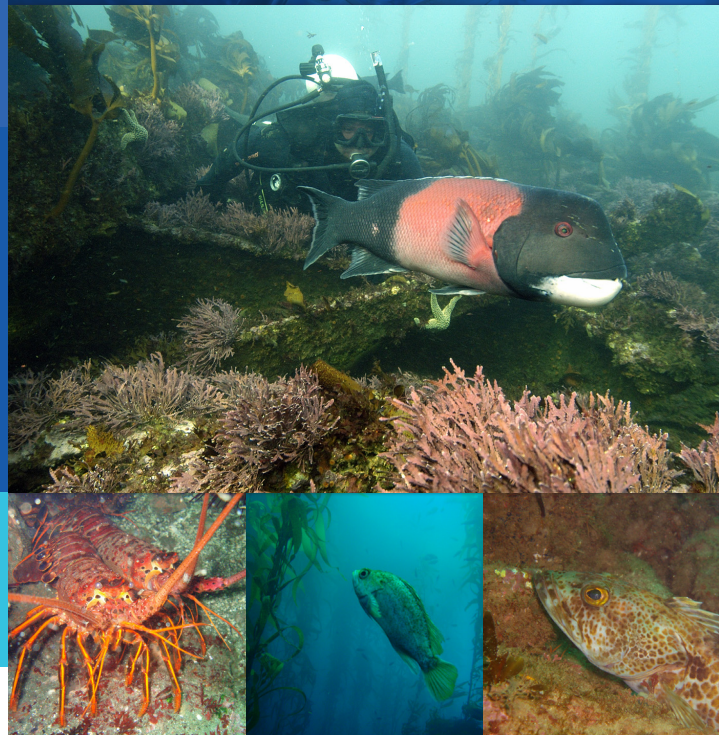


# A Guide to Santa Barbara Channel's Marine Protected Areas



It is unlawful to injure, damage, take, or possess any living, geological, or cultural marine resource. Take incidental to certain permitted activities may be allowed. Other restrictions may apply. See CCR T14 §632(b) for details.

- Campus Point
- Goleta Slough

## No-Take State Marine Conservation Area

It is unlawful to injure, damage, take, or possess any living, geological, or cultural marine resource. Scientific take may be permitted.

- Point Conception
- Richardson Rock (San Miguel Island)
- Harris Point (San Miguel Island)
- Judith Rock MR (San Miguel Island)
- Carrington Point MR (Santa Rosa Island)
- Skunk Point MR (Santa Rosa Island)
- South Point MR (Santa Rosa Island)
- Gull Island MR (Santa Cruz Island)
- Scorpion MR (Santa Cruz Island)
- Anacapa Island MR
- Footprint MR (Anacapa Channel)
- Begg Rock MR (San Nicholas Island)
- Santa Barbara Island MR

## State/Federal Marine Reserves

It is unlawful to injure, damage, take, or possess any living, geological, or cultural marine resource, except:

- Kashayit
- Naples

Recreational take of finfish, giant kelp by hand, and invertebrates except rock scallops and mussels is allowed. Scientific take may be permitted.

Recreational take of lobster and pelagic finfish is allowed. Commercial take of lobster finfish is allowed. Scientific take may be permitted.

- Anacapa Island
- Painted Cave (Santa Cruz Island)

Recreational take of lobster and pelagic finfish is allowed. Scientific take may be permitted.

Recreational take of finfish, giant kelp by hand, and invertebrates except rock scallops and mussels is allowed. Scientific take may be permitted.

## State/Federal Marine Conservation Areas (MPAs)

## Points of Contact:

Report oil spills: (800) 852-7550  
Report stranded marine mammals: (805) 567-1505

### BOATING INFORMATIONAL OFFICES

Santa Barbara Waterfront: (805) 564-5531  
Harbor Patrol: (805) 564-5530  
Ventura Port District: (805) 642-8538  
Harbor Patrol: (805) 642-8618 / VHF Channel 16  
Channel Islands Harbor Department: (805) 973-5950  
Harbor patrol: (805) 973-5959

Report poaching & polluting:  
(888) 334-CalTIP (888-334-2258)

California Department of Fish & Wildlife:  
[www.wildlife.ca.gov/MPAs](http://www.wildlife.ca.gov/MPAs)

Santa Barbara Channel MPA Collaborative:  
[www.mpacollaborative.org/santabarbara/](http://www.mpacollaborative.org/santabarbara/)



## About Marine Protected Areas

- Marine protected areas, or MPAs, are specially designated underwater areas set aside to help conserve, manage, and protect marine resources. The take of marine resources in these areas is limited or prohibited.
- MPAs are recognized tools for protecting and restoring marine life. MPAs foster diverse and healthy habitats, safeguarding the ocean's resources for economic, recreational, and environmental benefits now and into the future.
- California was the first state in the U.S. to establish a statewide network of MPAs. There are now 124 MPAs statewide.
- The Santa Barbara Channel region consists of 20 MPAs and 2 Special Closures.

## MPA Regulations

- Fishing gear may not be deployed when in marine reserves.
- Boats are allowed to anchor and transit through an MPA with catch on board.
- Unless otherwise stated all non-consumptive recreational activities such as swimming, wading, boating and anchoring, diving, and surfing are allowed in MPAs.
- Visit the CA Department of Fish and Wildlife website for more information about MPAs, including specific MPA boundaries and regulations at: [www.wildlife.ca.gov/MPAs](http://www.wildlife.ca.gov/MPAs).

## California Fishing Regulations

- A fishing license is required for anyone fishing aged 16 and up, except when fishing from a public fishing pier in ocean waters. Fishing report cards for Sturgeon and Spiny Lobster are required to take either of these species.
- "Take" means to hunt, pursue, catch, capture, or kill fish, invertebrates and other marine species, or attempting to do so.

\*This document is provided as a courtesy and does not replace the official laws and regulations found in the California Fish and Game Code or the California Code of Regulations Section 632, Title 14.



# California's Marine Protected Areas SANTA BARBARA AND VENTURA AREA DETAIL



For more information and complete regulations and boundaries, go to: [wildlife.ca.gov/MPAs](http://wildlife.ca.gov/MPAs)

Map not intended for navigational purposes.

## MPA Designation

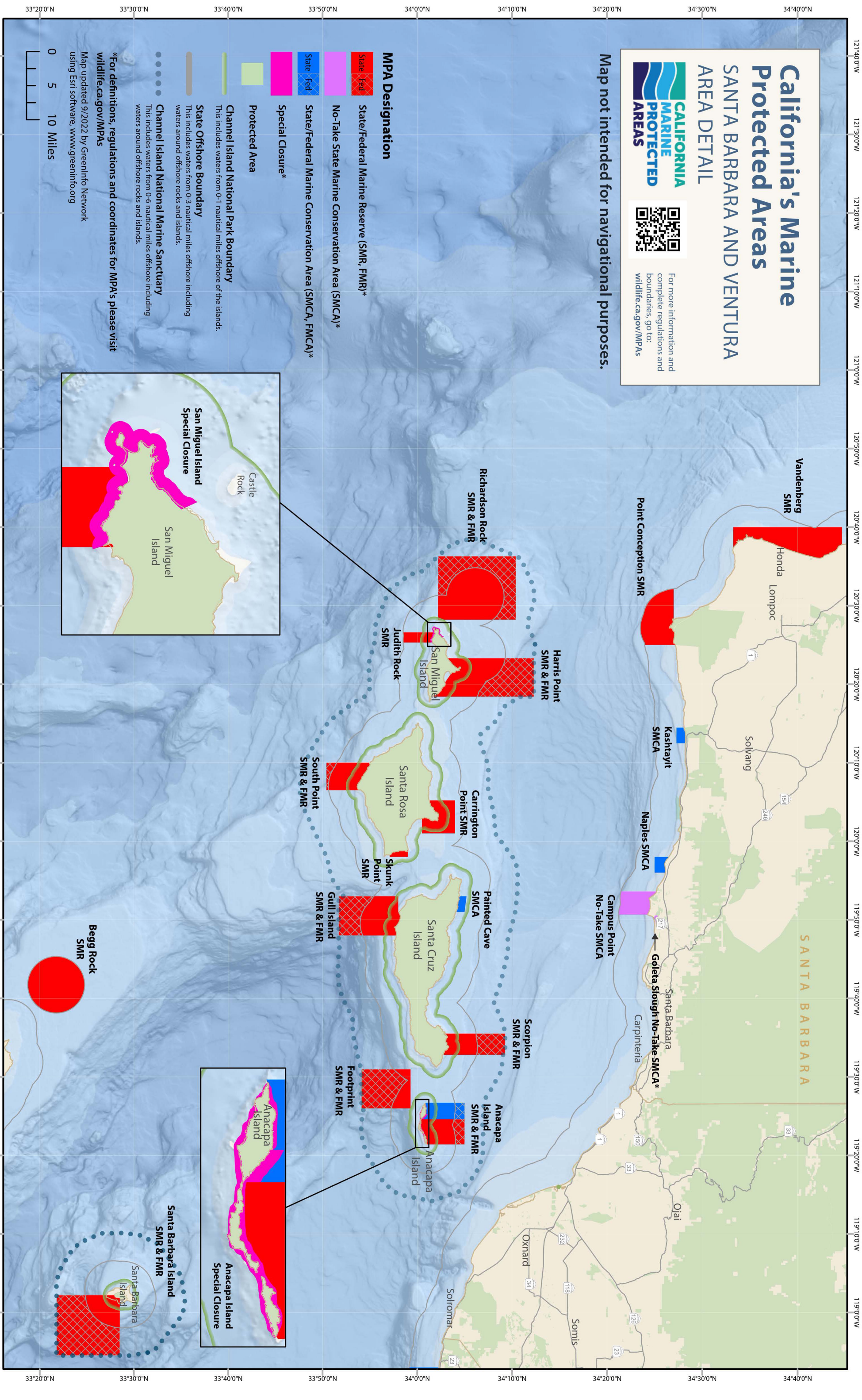
- State/Federal Marine Reserve (SMR, FMR)\*
- No-Take State Marine Conservation Area (SMCA)\*
- State/Federal Marine Conservation Area (SMCA, FMCA)\*
- Special Closure\*
- Protected Area
- Channel Island National Park Boundary
- State Offshore Boundary
- Channel Island National Marine Sanctuary

- This includes waters from 0-1 nautical miles offshore of the islands.
- This includes waters from 0-3 nautical miles offshore including waters around offshore rocks and islands.
- This includes waters from 0-6 nautical miles offshore including waters around offshore rocks and islands.

\*For definitions, regulations and coordinates for MPAs please visit [wildlife.ca.gov/MPAs](http://wildlife.ca.gov/MPAs)

Map updated 9/2022 by GreenInfo Network  
using Esri software, [www.greeninfo.org](http://www.greeninfo.org)

0 5 10 Miles





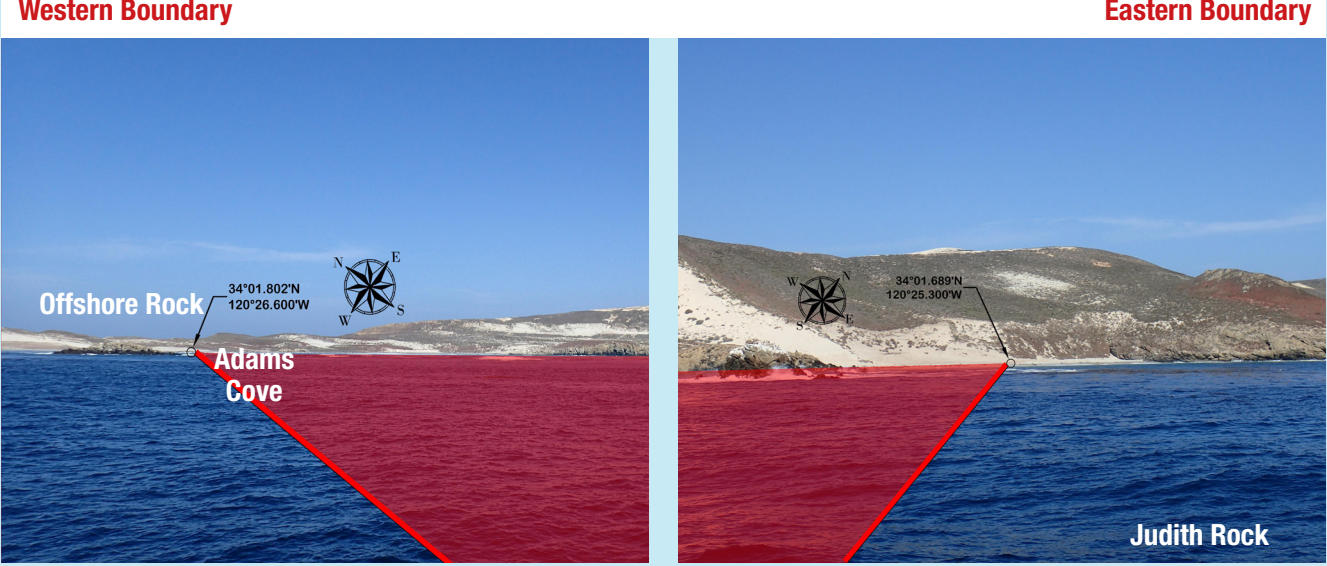
# SANTA BARBARA CHANNEL'S MARINE PROTECTED AREA BOUNDARIES

## San Miguel Island

### Harris Point State and Federal Marine Reserves

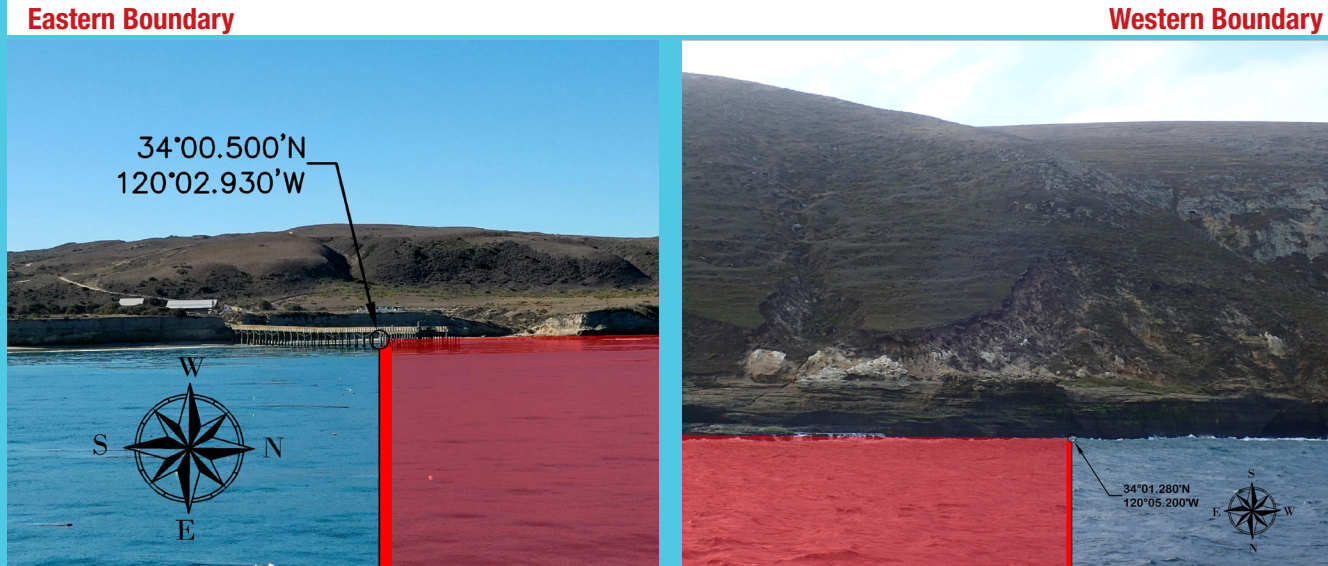


### Judith Rock State Marine Reserve



## Santa Rosa Island

### Carrington Point State Marine Reserve



### Skunk Point State Marine Reserve



### South Point State and Federal Marine Reserves

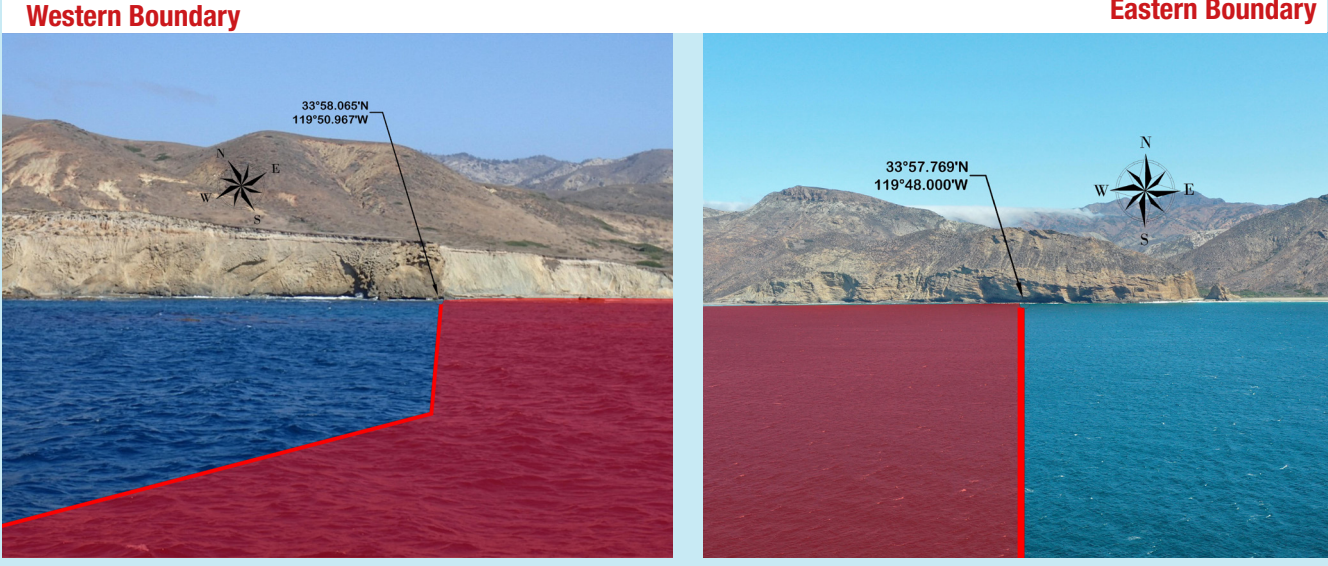


## Santa Cruz Island

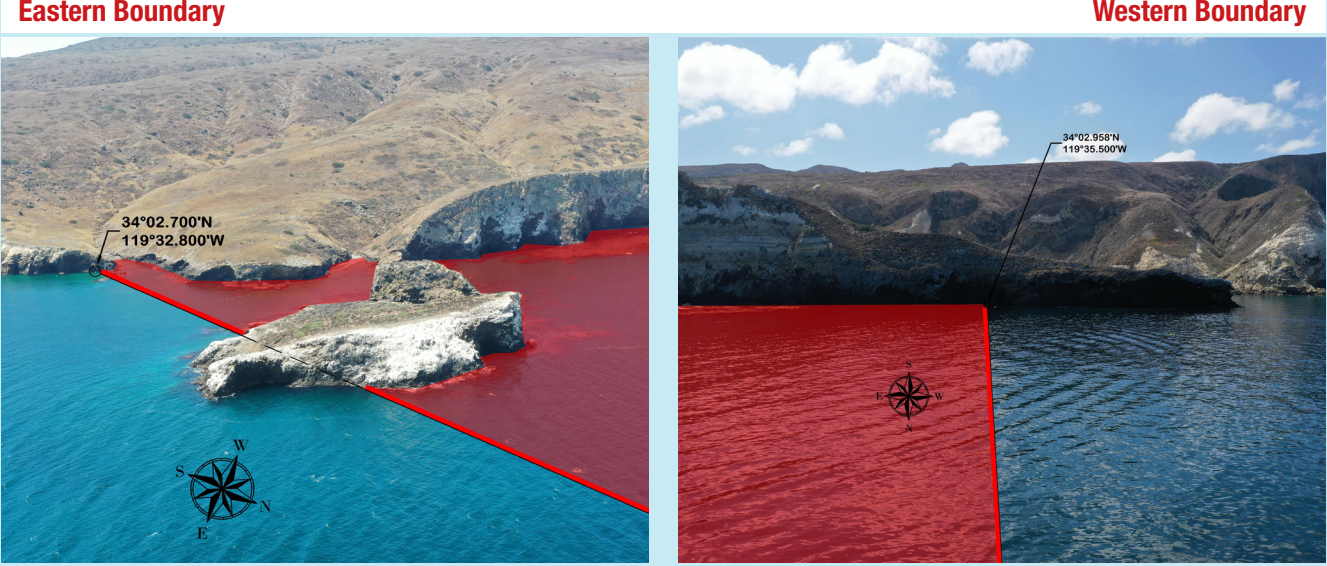
### Painted Cave State Marine Conservation Area



### Gull Island State and Federal Marine Reserves



### Scorpion State and Federal Marine Reserves



This document is provided as a courtesy only and photos are not intended for navigational use. Use GPS coordinates to determine the exact location of MPA boundaries.

## Anacapa Island

### Anacapa Island State and Federal Marine Reserves



### Anacapa Island State and Federal Marine Conservation Areas

