

Los Angeles County Marine Protected Areas (MPAs)

MPAs	Allowed Uses
<p>Point Dume State Marine Conservation Area (SMCA)</p>	<p>It is unlawful to injure, damage, take, or possess any living, geological, or cultural marine resource for recreational and/or commercial purposes, EXCEPT: Recreational take of white seabass and pelagic finfish by spearfishing is allowed. Commercial take of coastal pelagic species by round haul net, brail gear, and light boat; and swordfish by harpoon is allowed. See CCR T14 §632(b) for details.</p>
<p>Point Dume State Marine Reserve (SMR)</p>	<p>It is unlawful to injure, damage, take, or possess any living, geological, or cultural marine resource. See CCR T14 §632(b) for details.</p>
<p>Point Vicente State Marine Conservation Area (SMCA No-Take)</p>	<p>It is unlawful to injure, damage, take, or possess any living, geological, or cultural marine resource for recreational and/or commercial purposes. Take incidental to certain permitted activities may be allowed. Other restrictions may apply. See CCR T14 §632(b) for details.</p>
<p>Abalone Cove State Marine Conservation Area (SMCA)</p>	<p>It is unlawful to injure, damage, take, or possess any living, geological, or cultural marine resource for recreational and/or commercial purposes, EXCEPT: Recreational take of market squid by hand-held dip net, and white seabass and pelagic finfish by spearfishing is allowed. Commercial take of coastal pelagic species by round haul net, brail gear and light boat; and swordfish by harpoon is allowed. See CCR T14 §632(b) for details.</p>

California Department of Fish and Wildlife

For more information:
www.wildlife.ca.gov

Report Poaching & Polluting:

1-888-334-CalTIP
1-800-334-2258

Learn More About Clean Boating:

415-904-6905
www.BoatingCleanandGreen.com

Report Oil Spills:

800-852-7550

Report Injured Marine Mammals & Seabirds:

Malibu Coast:
California Wildlife Center 310-458-WILD
1-310-458 9453

Los Angeles & Palos Verdes Coast:
Marine Animal Rescue 800-399-4253

Los Angeles MPA Collaborative
www.mpacollaborative.org/la.html



A Guide to Fishing in and near Marine Protected Areas

LOS ANGELES COUNTY



- Point Dume SMCA • Point Dume SMR
- Point Vicente SMCA (No-Take) • Abalone Cove SMCA

LOS ANGELES COUNTY MARINE PROTECTED AREA BOUNDARIES

This document is provided as a courtesy only and photos are not intended for navigational use. Use GPS coordinates to determine the exact location of MPA boundaries.



Point Dume SMCA- Upcoast Boundary



Boundary between Point Dume SMCA and Point Dume SMR



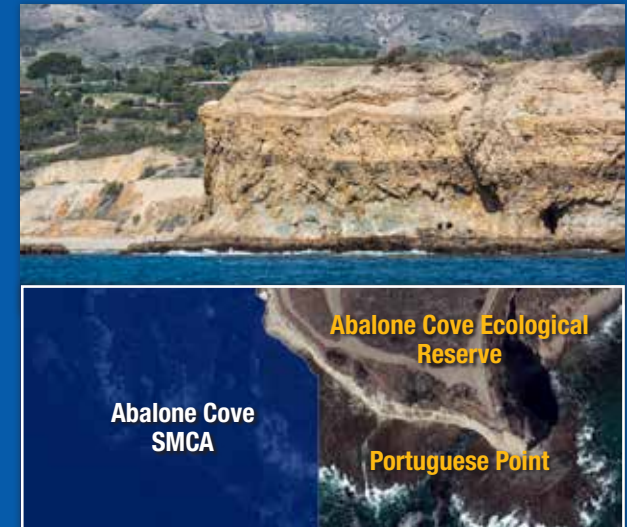
Point Dume SMR- Downcoast Boundary



Point Vicente SMCA (No Take)- Northwestern Boundary



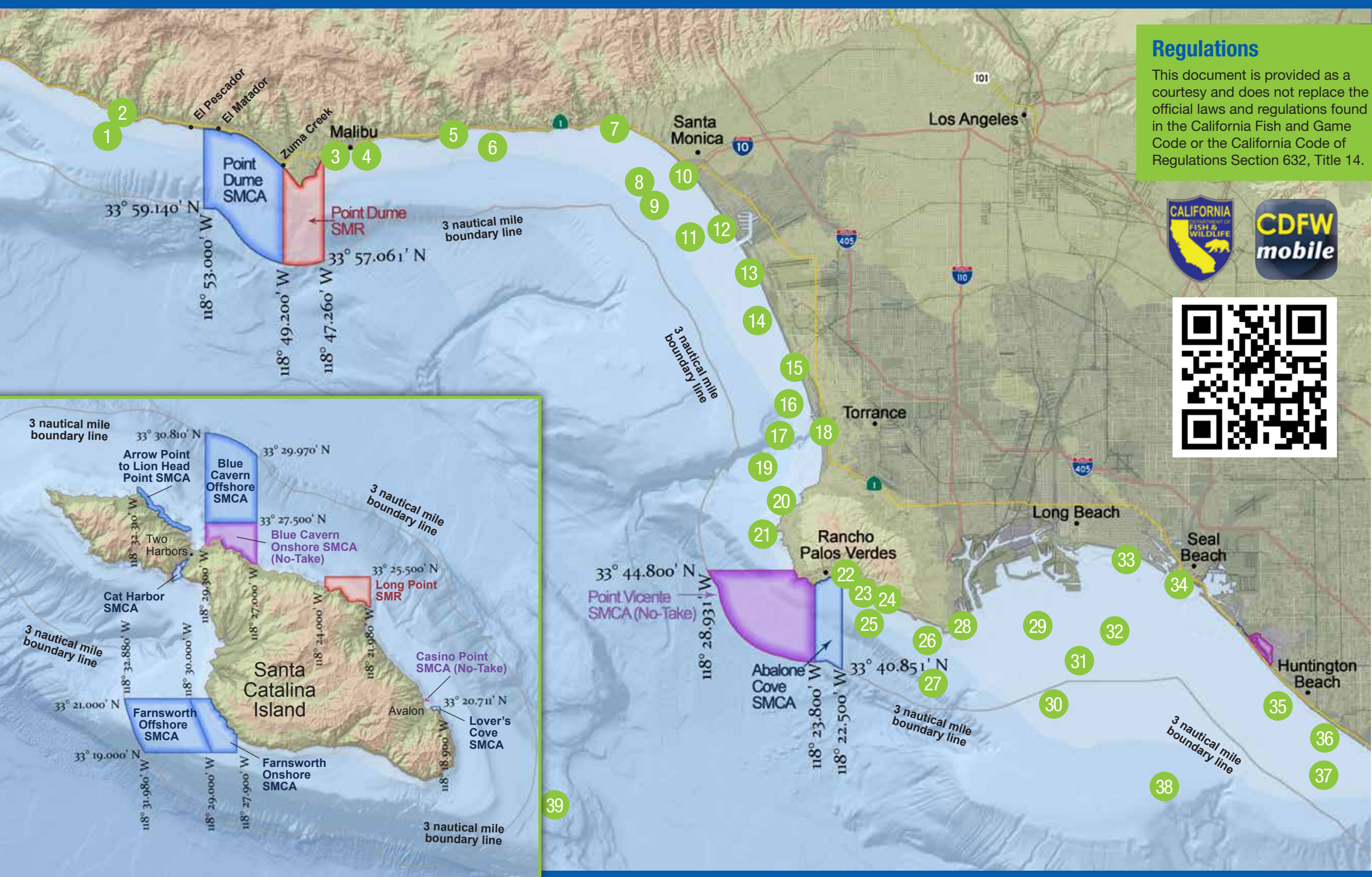
Boundary between Point Vicente SMCA (No Take) and Abalone Cove SMCA



Abalone Cove SMCA- Eastern Boundary

POPULAR FISHING AREAS IN LOS ANGELES COUNTY

- | | | | | | | | | |
|--|---|--|--|--|---|--|--|--|
| 1 Harrison Reef
34° 02.05'N 118° 56.55'W | 5 Malibu Pier
34° 02.23'N 118° 40.60'W | 9 Star of Scotland Shipwreck
33° 59.52'N 118° 31.27'W | 13 Dockweiler State Beach
33° 56.53'N 118° 26.55'W | 17 Redondo Beach Artificial Reef
33° 50.23'N 118° 24.53'W | 21 Rocky Pt Kelp
33° 46.23'N 118° 26.12'W | 25 Portuguese Kelp
33° 43.29'N 118° 21.47'W | 30 LA Harbor Area
33° 38.80'N 118° 13.20'W | 35 Huntington Flats
33° 39.30'N 118° 03.40'W |
| 2 Leo Carrillo State Beach
02.67'N 118° 56.03'W | 6 Malibu Artificial Reef
34° 01.49'N 118° 39.03'W | 10 Santa Monica Pier
34° 00.59'N 118° 29.78'W | 14 Scattergood Flats
33° 55.20'N 118° 26.50'W | 18 Redondo Beach Pier
33° 50.38'N 118° 23.55'W | 22 Sacred Cove
33° 44.34'N 118° 22.22'W | 26 Pt. Fermin Kelp
33° 42.11'N 118° 17.97'W | 31 Horseshoe Kelp
33° 40.07'N 118° 12.15'W | 36 Huntington Beach Pier
33° 39.39'N 118° 00.16'W |
| 3 Paradise Cove
34° 01.22'N 118° 47.1 9'W | 7 Will Rogers State Beach
34° 02.35'N 118° 33.00'W | 11 Marina del Rey Art. Reefs
33° 58.10'N 118° 29.18'W | 15 Manhattan Beach Pier
33° 53.06'N 118° 24.73'W | 19 Palawan Shipwreck
33° 49.42'N 118° 24.88'W | 23 Portuguese Bend
33° 44.19'N 118° 21.62'W | 27 Minesweeper Shipwreck
33° 41.60'N 118° 19.45'W | 32 Gambling Ship Shipwreck
33° 41.49'N 118° 08.75'W | 37 Huntington Beach Art. Reefs
33° 37.28'N 117° 59.85'W |
| 4 Escondido Beach
31° 01.49'N 118° 46.07'W | 8 Santa Monica Bay Art.Reef
34° 00.78'N 118° 32.55'W | 12 Venice Pier
33° 58.73'N 118° 28.03'W | 16 Hermosa Beach Artificial Reef
33° 51.22'N 118° 24.80'W | 20 Avalon Shipwreck
33° 47.28'N 118° 25.62'W | 24 Ocean Trails Reserve
33° 43.47'N 118° 20.43'W | 28 Cabrillo Pier
33° 42.55'N 118° 16.78'W | 33 Belmont Pier
33° 45.50'N 118° 08.88'W | 38 Outer Oil Rigs
33° 34.99'N 118° 07.81'W |
| | | | | | | 29 Georgia Straights Shipwreck
33° 41.34'N 118° 12.49'W | 34 Seal Beach Pier
33° 44.35'N 118° 06.39'W | 39 The 209
33° 35.00'N 118° 36.00'W |



Regulations

This document is provided as a courtesy and does not replace the official laws and regulations found in the California Fish and Game Code or the California Code of Regulations Section 632, Title 14.



KNOW THE RULES BEFORE YOU HEAD OUT.

About Marine Protected Areas

- Marine protected areas, or MPAs, are specially designated underwater areas that prohibit or limit the take of marine resources.
- MPAs are recognized tools for protecting and restoring marine life. MPAs foster diverse and healthy habitats, safeguarding the ocean's resources for economic, recreational, and environmental benefits now and into the future.

California's MPAs

- California was the first state in the U.S. to establish a statewide network of MPAs. There are now 124 MPAs statewide.
- Major revisions and additions to Southern California MPAs went into effect in state waters on January 1, 2012.
- The Southern California region of the MPA network consists of 50 MPAs, including the Channel Islands MPAs. The 50 MPAs in the region cover approximately 15% of Southern California state waters.

MPA Regulations

- Boats are allowed to anchor and transit through an MPA with catch on board, however, fishing gear may not be deployed when in marine reserves. See code 632(a)(7) and 632(a)(8) and 632(b).
- Unless otherwise stated all non-consumptive recreational activities such as swimming, wading, boating, diving, and surfing are allowed in MPAs.
- Visit the CA Department of Fish and Wildlife website for more information about MPA boundaries and regulations at: www.wildlife.ca.gov/MPAs

California Fishing Regulations

- A fishing license is required for any fishing, except for fishing from a public fishing pier in ocean waters. (Code 1.88) Fishing report cards for Sturgeon and Spiny Lobster are required to take either of these species from a public pier in ocean waters.
- "Take" means to hunt, pursue, catch, capture, or kill fish, mollusks, or crustaceans, or attempting to do so.

This document is provided as a courtesy and does not replace the official laws and regulations found in the California Fish and Game Code or the California Code of Regulations Section 632, Title 14.